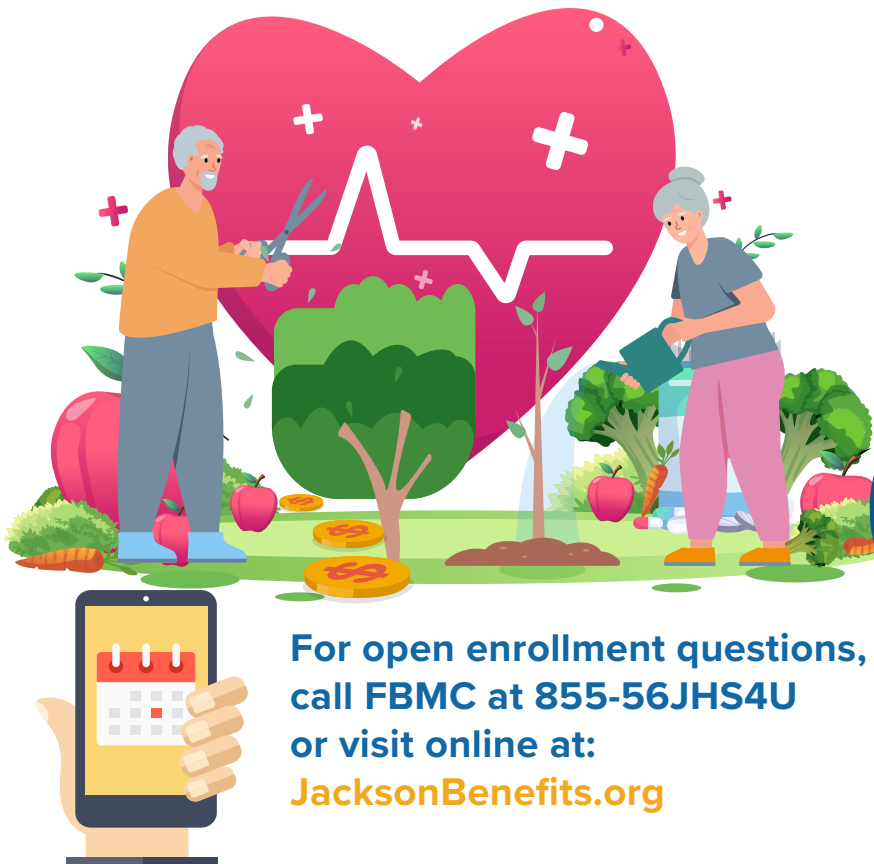


# 2025 RETIREE OPEN ENROLLMENT NEWS

## Important Dates

**Open Enrollment Dates:**  
Oct. 28, 2024 – Nov. 15, 2024

**Period of Coverage:**  
Jan. 1, 2025 – Dec. 31, 2025



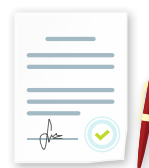
For open enrollment questions,  
call FBMC at 855-56JHS4U  
or visit online at:  
**JacksonBenefits.org**

## How to make Changes

If you wish to make changes  
please complete a form and  
mail or fax back to FBMC.

### Mail To:

FBMC Benefits  
Management, Inc.  
PO Box 10789  
Attn: Mail Slot 32  
Tallahassee, FL  
32302-2789



### Fax to:

1-866-836-9943

### Email:

JHSRetiree@fbmc.com

## Contact Us

### Office Hours

7:30 a.m. – 5:00 p.m. ET

### On-site FBMC Service Center

Park Plaza West  
1611 NW 12 AVE  
Room 109b (basement)  
305-585-6512

### FBMC Service Center

855-56JHS4U (855-565-4748)

## ABOUT YOUR RETIREE OPEN ENROLLMENT

### MEDICARE HEALTHCARE OPTIONS ARE AVAILABLE TO JHS RETIREES!

You have an opportunity to enroll within the Over 65 Medicare plan options being offered through Humana or Avmed. Medicare Enrollment is done directly through the carriers. For benefits information or to enroll in any of these plans, please contact:

#### AVMED

1-800-453-4564  
Mon – Fri, 8 a.m. – 5 p.m. EST  
Post enrollment: 1-800-782-8633 (TTY 711)

#### HUMANA

1-800-824-8242 (TTY 711)  
Mon – Fri, 8 a.m. – 8 p.m. EST  
Post enrollment: 1-866-396-8810 (TTY 711)  
Mon – Fri, 8 a.m. – 9 p.m. EST

#### Oct. 1 - March 31

Mon. – Sun., 8 a.m. – 8 p.m. EST

#### April 1 - Sept. 30

Mon. - Fri., 8 a.m. - 8 p.m. and  
Sat., 9 a.m. - 1 p.m. EST

## BE MINDFUL

**Medical Premium Increase of 5%** for all plans. Inclusive of the High Rx and High No Rx Medical Plans.

**DOWNLOAD AN FRS, PHT, OR ACH FORM AT  
JACKSONBENEFITS.ORG, MAIL TO:**

FBMC Benefits Management, Inc.  
PO Box 10789  
Attn: Mail Slot 32  
Tallahassee, FL 32302-2789



A new FRS, PHT, or Direct Debit (ACH) Authorization form is ONLY required if you are adding new benefits for 2025.

**FBMC**  
BENEFITS MANAGEMENT